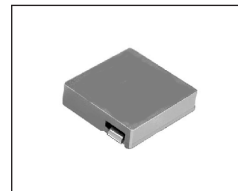


# SMT Power Inductor

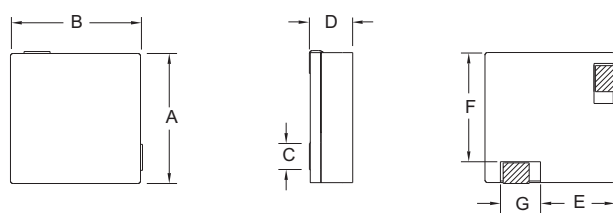
## HAL1375 Type

### Features

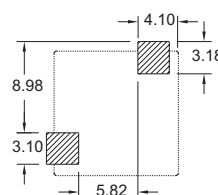
- RoHS compliant.
  - Low profile (7.5mm max. height) SMD type.
  - Magnetically shielded, suitable for high density mounting.
  - High energy storage and low DCR.
  - Provided with embossed carrier tape packing.
  - Ideal for power source circuits, DC-DC converter, DC-AC inverters inductor application.
- In addition to the standard versions shown here, customized inductors are available to meet your exact requirements.



### Mechanical Dimension:



### RECOMMENDED PAD PATTERNS



UNIT: mm / inch  
 A = 12.5±0.4 / 0.492±0.016  
 B = 12.5±0.4 / 0.492±0.016  
 C = 7.50 / 0.295 Max.  
 D = 2.40 / 0.094  
 E = 7.75 / 0.305  
 F = 10.35 / 0.407  
 G = 3.75 / 0.148

### Electrical Characteristics: At 25°C: 100KHz, 1V

PART NO.	$L_0$ <sup>1</sup> ( $\mu$ H)	$L_i$ ( $\mu$ H)±20%	DCR (m $\Omega$ ) MAX	$I_{sat}$ <sup>2</sup> (A $\bar{c}$ )
HAL1375-1R0	1.0	0.80	1.20	30
HAL1375-1R4	1.4	1.10	1.50	30
HAL1375-2R0	2.0	1.60	2.80	25
HAL1375-2R5	2.5	2.00	3.20	25

1.  $L_0$  is the initial inductance.
2.  $I_{sat}$  is the DC current which cause the inductance drop to  $L_i$ .
3. Operating temperature : -20°C to 105°C ( including self-temperature rise ).



DELTA ELECTRONICS, INC.

(TAOYUAN PLANT CPBG) 252, SAN YING ROAD, KUEISAN INDUSTRIAL ZONE, TAOYUAN SHIEN, 333, TAIWAN, R.O.C.

TEL: 886-3-3591968; FAX: 886-3-3591991

<http://www.deltaww.com>